

|                            |   |
|----------------------------|---|
| <b>JOB TITLE</b>           | Physiotherapist (Full-Time)   |
| <b>LOCATION/DEPARTMENT</b> | Essex and East London<br>40 hours (split 4 days in clinic and 1-day remote)<br>*part time/flexible hours may be considered* |
| <b>REPORTS TO</b>          | Essex-London Site Manager   |
| <b>ACCOUNTABLE TO</b>      | Clinical Lead of Occupational Health Physiotherapy Services – South of England & Wales                                      |

## **A DAY IN THE LIFE AS A PHYSIOTHERAPIST AT IPRS HEALTH, ESSEX-LONDON**

You will have a diverse and wide variety of patients to assess and treat. Your week will predominately consist of the management of both face to face musculoskeletal (MSK) complaints within clinic along with workplace assessments remotely. We strive for clinical excellence and IPRS Health understand the importance for adequate time to complete your assessments. Therefore, our face to face assessments allow one-hour slots for each initial assessment followed by 30 minute follow up reviews. IPRS Health encourage clinical autonomy with treatment so we encourage flexibility to treat your patients on an individual basis keeping in line with the current evidence-based guidelines.

As an IPRS Health Physiotherapist, we will provide you with a wide range of skills which will add more variety to your day compared to a typical MSK physiotherapy practice. We also understand the importance of a balanced home and work life and as such, your working days can be flexible based on your circumstances. Furthermore, we understand the importance for clinical development, and we offer an extensive CPD and training plan. IPRS Health will also provide extensive CPD into developing your skills in occupational health (OH) physiotherapy. In this role, previous OH experience is desired but not essential.

See <http://www.yourfuture-iprshealth.co.uk/> for more information about working with IPRS Health.



### **YOUR KEY TASKS AND RESPONSIBILITIES**

- You will cover a range of musculoskeletal (MSK) assessments and treatments
- You will work within your scope of practice
- You will complete notes and reports in accordance with IPRS Health, CSP and HCPC standards
- You will treat the patient as a whole using the Biopsychosocial Model
- You will work with your team to meet challenging but achievable KPI's and goals
- You will take initiative in progressing your individual professional development and clinical effectiveness
- You will maintain good communication and relations with all your stakeholders
- You will liaise, as regularly as is needed, with your Line Manager and wider IPRS team
- You will manage and prioritise your work tasks
- You will be flexible to undertake any other duties compatible with the grading of the post, as required
- You will ensure that any recommendations for further treatment, onward referrals or clinical investigations are reasonable using clinical reasoning, clinical experience/knowledge and current evidence
- You will be a "clinical point of contact" for non-clinical personnel seeking clinical advice or information whilst undertaking telephone screening calls, dealing with client queries or making referrals
- You will actively engage in Clinical Audit duties as directed by the Clinical Lead in line with the IPRS Clinical Audit Strategy.

**PERSON SPECIFICATION**

**(E) Essential (D) Desirable**

**Education and Qualifications:**

- Formal qualification in Physiotherapy (E)
- Minimum 2-year of post graduate experience (D)
- Member of the Health & Care Professions Council (HCPC) (E)
- Membership to the Chartered Society of Physiotherapy (E)
- Evidence of continuing professional development (E)

**Experience and Knowledge:**

- Previous experiences of working in an MSK environment (E)
- Previous experiences of working in a workplace or occupational health environment (D)
- Computer literate with good Excel, Word and PowerPoint skills (E)
- Flexibility to meet KPI's by helping your team when required i.e. occasionally assisting with other clinics/services (E)
- Full driving license and car (D)

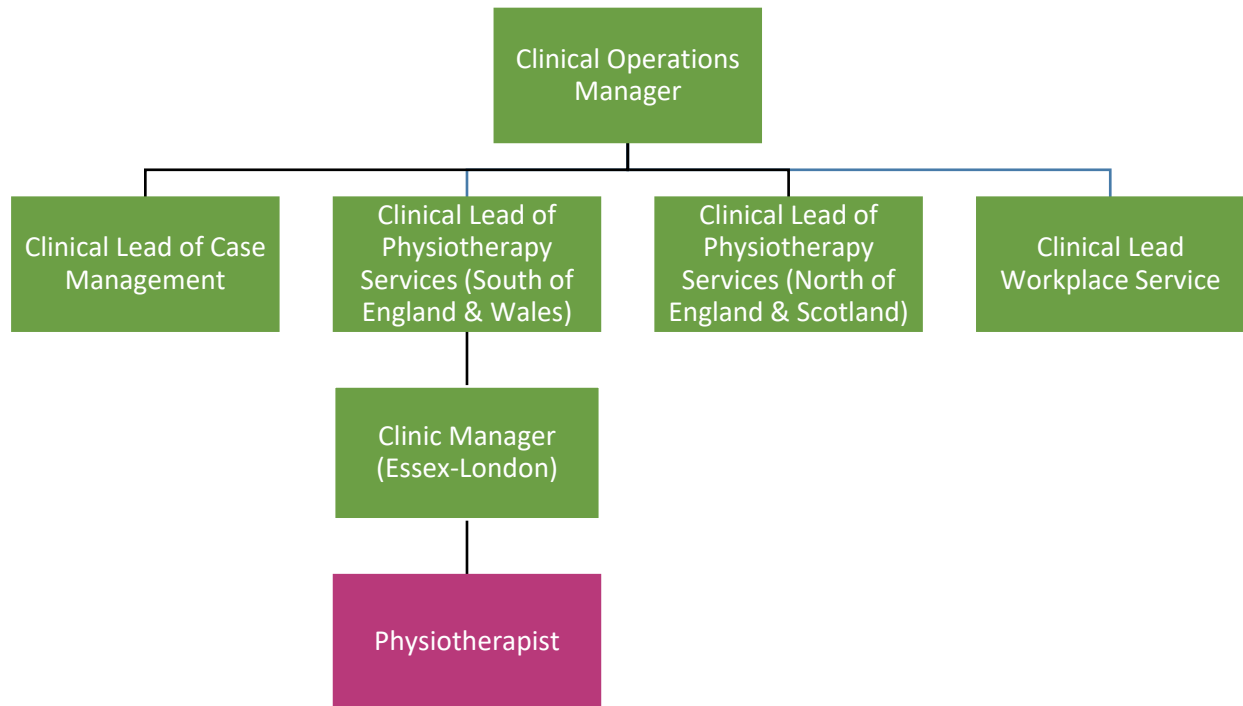
**Skills and Abilities:**

- Working within a team
- Working under minimum supervision
- Thriving under change and innovation
- You jump at the opportunity to collaborate on projects
- Communicating to patients and clients
- Working autonomously and managing your time
- Working with databases and Microsoft programmes
- Understanding the importance of clinical governance

**ENHANCED DBS CHECK REQUIRED:**

**Yes**

## ORGANISATION CHART



**Date:** December 2019