

<b>JOB TITLE</b>	Physiotherapist – 28 hours (Part-Time) / Flexible shifts
<b>LOCATION/DEPARTMENT</b>	Norwich
<b>REPORTS TO</b>	Regional Clinical Manager
<b>ACCOUNTABLE TO</b>	Clinical Lead of Musculoskeletal Physiotherapy – South of England & Wales

## A DAY IN THE LIFE AS A PHYSIOTHERAPIST AT IPRS HEALTH, NORWICH

You will have a wide variety of patients to assess and treat. Your day will predominately consist of the management of face to face patients with musculoskeletal complaints along with occasional workplace assessments. We strive for clinical excellence and therefore IPRS Health understand the importance for adequate time to complete your assessments. Therefore, we allocate one-hour slots for each initial assessment.

As an IPRS Health Physiotherapist we will provide you with a wide variety of skills which will add more variety to your day compared to a typical MSK physiotherapy practice. We also understand the importance of a balanced home and work life and therefore your working days can be flexible based on your circumstances. Furthermore, we understand the importance for clinical development and therefore we offer an extensive CPD and training plan.

See <http://www.yourfuture-iprshealth.co.uk/> for more information about working with IPRS Health.



## YOUR KEY TASKS AND RESPONSIBILITIES

- You will cover a range of musculoskeletal (MSK) assessments and treatments
- You will work within your scope of practice
- You will complete notes and reports in accordance with IPRS Health, CSP and HCPC standards
- You will treat the patient as a whole using the Biopsychosocial Model
- You will work with your team to meet challenging but achievable goals
- You will take initiative in progressing your individual professional development and clinical effectiveness
- You will maintain good communication and relations with all of your stakeholders
- You will liaise, as regularly as is needed, with your Line Manager and wider IPRS team
- You will manage and prioritise your work tasks
- You will be flexible to undertake any other duties compatible with the grading of the post, as required

# WHAT DO WE NEED FROM YOU...?

**(E) Essential (N) Nice to have**

## **Education and Qualifications:**

- Formal Qualification in Physiotherapy (E)
- Minimum 1-year of MSK clinical experience (E)
- Member of the Health & Care Professions Council (HCPC) (E)
- Membership to Chartered Society of Physiotherapy(E)
- Evidence of continuing professional development (E)

## **Experience & Knowledge:**

- Previous experiences of working in MSK environment (E)
- Previous experiences of working in an workplace or occupational health environment (N)
- Computer literate with good Excel, Word and PowerPoint skills (E)

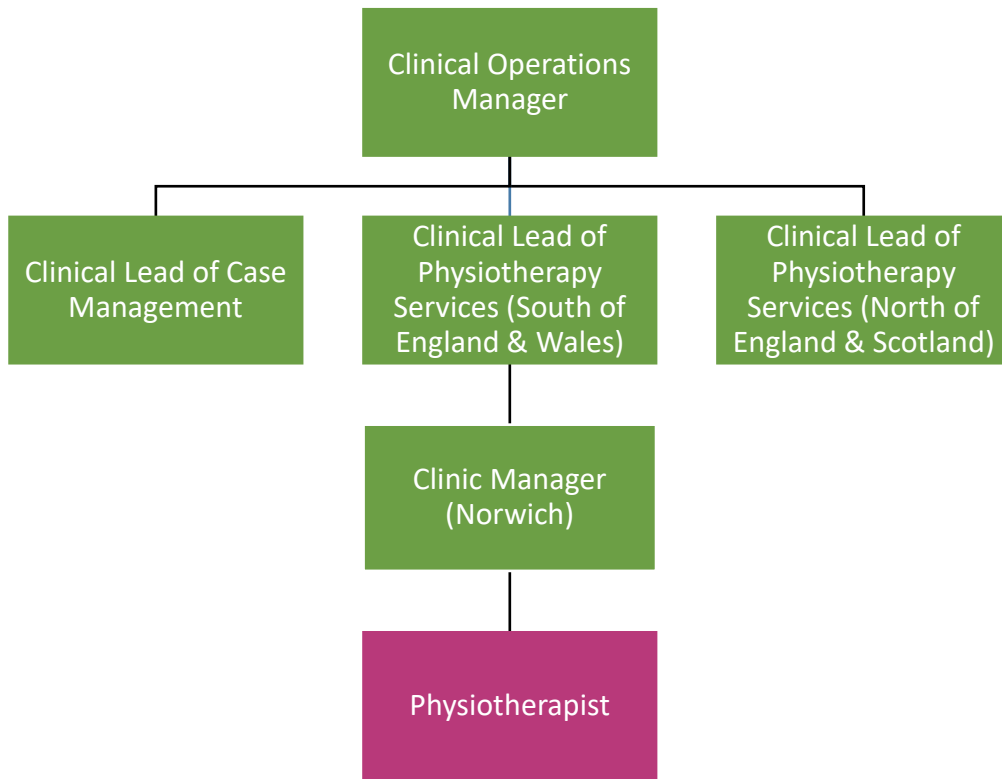
## **YOU'RE GOOD AT....**

- Working within a team
- Working under minimum supervision
- Thriving under change and innovation
- You jump at the opportunity to collaborate on projects
- Communicating to patients and clients
- Working autonomously and managing your time
- Working with databases and Microsoft programmes
- Understanding the importance of clinical governance

**ENHANCED DBS CHECK REQUIRED:**

**Yes**

**ORGANISATION CHART**



**Date:** Jan 2018